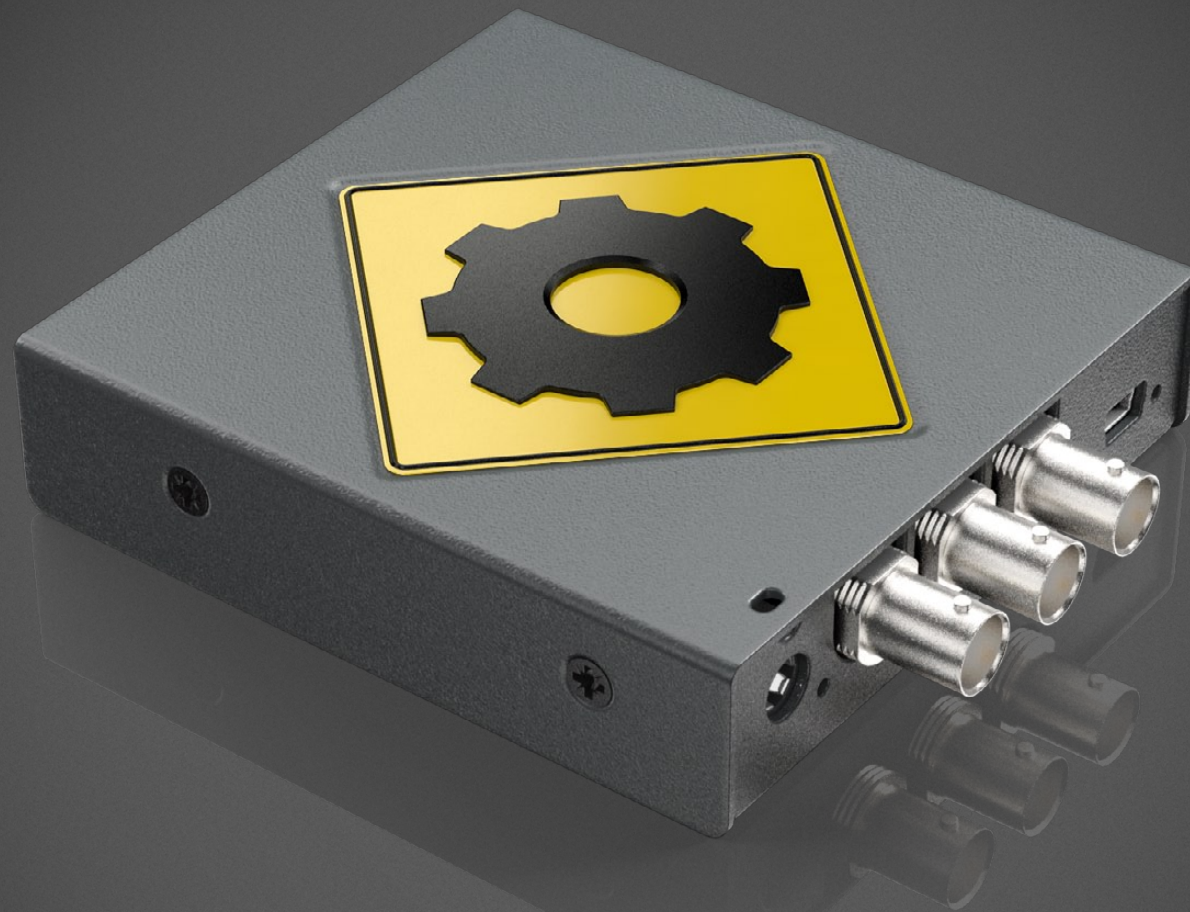


Instruction Guide

Blackmagicdesign 

Blackmagic Converter Utility



Mac OS X™

Windows™

February 2010

Blackmagic Converter Utility

Installing of the Blackmagic Converter Utility

Installation and Removal on Mac OS X

Installation and Removal on Windows

Using Blackmagic Converter Utility

The Converter Utility Interface

4

4

4

5

6





Welcome to Mini Converter Utility.

Thank you for purchasing a Blackmagic Design Mini Converter. Blackmagic Converter Utility enables you to update your Blackmagic Design Mini Converters with the latest firmware. Firmware updates may add new features, support new formats and standards, or provide increased compatibility with other video and audio hardware. It is always best to use the latest version of Converter Utility so you receive all the latest updates for your models of Mini Converter.

Converter Utility runs on the latest versions of Mac OS X. On the Windows platform, Converter Utility runs on both 32 and 64-bit versions of Windows XP, Windows Vista and Windows 7, with the latest service packs installed. Testing on previous versions of these operating systems is not conducted and so it is always best to keep up to date with the latest versions.

The latest version of Converter Utility can always be downloaded from <http://www.blackmagic-design.com/support/software/>.

We think it should take you approximately 5 minutes to complete installation. Before you install Converter Utility, please check our website at www.blackmagic-design.com and click the support page to download the latest updates to this manual and Converter Utility software. Lastly, please register your Mini Converter when downloading software updates. We would love to keep you updated on new software updates and new features for your Mini Converter. Perhaps you can even send us any suggestions for improvements to the software. We are constantly working on new features and improvements, so we would love to hear from you!

Grant Petty

CEO Blackmagic Design

4 Installation of the Blackmagic Converter Utility



Installation and Removal on Mac OS X

After downloading the Converter Utility software and unzipping the downloaded file, open the resulting disk image to reveal its contents.

Drag the Blackmagic Converter Utility icon and drop it on to the Applications icon. Blackmagic Converter Utility is now installed.

To remove Blackmagic Converter Utility from your Mac, simply drag its icon from the Applications folder to the Trash and then choose to Empty Trash.

Installation and Removal on Windows

After downloading the Converter Utility software and unzipping the downloaded file, you should see a Converter Utility folder containing this PDF manual and the Converter Utility installer.

Double-click the installer and follow the onscreen prompts to complete the installation. When the installation has finished, it will prompt you to restart the computer. The restart will load a USB driver for Converter Utility so that it can communicate with any Blackmagic Design Mini Converter. Click "restart" to complete the installation process. Once the computer has restarted, Blackmagic Converter Utility will be fully installed and ready to use.

To remove Blackmagic Converter Utility from Windows XP, go to the Add or Remove Programs control panel, select Blackmagic Converter Utility and click on Remove.

To remove Blackmagic Converter Utility from Windows Vista and Windows 7, go to the Programs and Features control panel, select Blackmagic Converter Utility and click on Uninstall.

5 Using Blackmagic Converter Utility

Using Blackmagic Converter Utility

It does not matter whether you launch Blackmagic Converter Utility before or after connecting the Mini Converter to your computer with a USB cable. However it is important to ensure that power is connected to the Mini Converter before connecting a USB cable between the computer and Mini Converter otherwise some computers may not detect the Mini Converter if power and USB cables are connected in the reverse order.

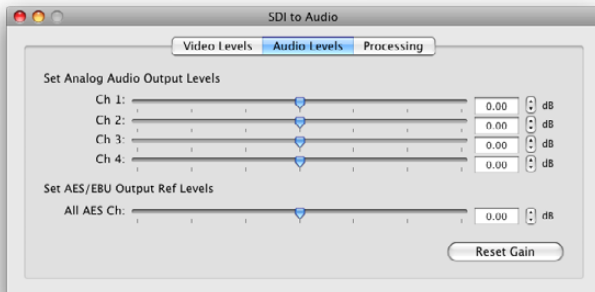
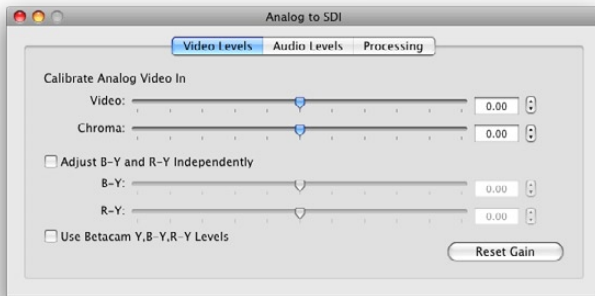
If you have connected power to your Mini Converter, you can attach a USB cable from the computer to the Mini Converter and launch the Blackmagic Converter Utility. If the converter is missing or is not detected for some reason, the Converter Utility will report, "No converter connected" in its title bar. Otherwise it will report the model name of your Mini Converter in the title bar.

If Converter Utility contains newer firmware than that currently installed in your Mini Converter, it will prompt you to update the firmware. Just follow the on screen instructions to complete the firmware update. Once the firmware update is complete, or if no firmware update is required, you will be able to make adjustments to your Mini Converter using the Converter Utility.

Any adjustments made through the Converter Utility interface will immediately be saved to the Mini Converter itself. This means that if power is lost to the Mini Converter, the new settings will be re-established as soon as power is restored to the Mini Converter. This means you never need to worry about losing your settings on the Mini Converter.

The Converter Utility interface is the same for all models of Mini Converter and is the same on both Mac OS X and Windows. Any features that are not applicable to your Mini Converter will be grayed out and inactive. For example, the Mini Converter SDI to Audio does not include any analog video and so all the adjustments for Video Levels are grayed out and inactive. Mini Converter Sync Generator is the most surprising case, as it has no adjustments at all. However it should still have its firmware updated by Converter Utility to ensure support for the latest formats and maximum compatibility with other hardware.

6 Using Blackmagic Converter Utility



The Converter Utility Interface

The Converter Utility interface is composed of three panes for Video Levels, Audio Levels and Processing. Click these tabs in order to reveal any adjustable options for your model of Mini Converter. Most of the settings are self-explanatory but there are a couple of points worth mentioning.

By default, the Video Levels for analog video are set to SMPTE levels. If you wish to switch to Betacam levels, enable the checkbox named "Use Betacam Y,B-Y,R-Y Levels". SMPTE levels are more common and even Betacam SP decks can use SMPTE levels so only switch this to Betacam if you are sure that Betacam levels are being used.

In the Audio Levels pane, the four analog audio channels can be adjusted independently as analog audio levels may vary between channels because analog is not perfect. However the 8 channels of AES/EBU digital audio are all adjusted together as digital audio levels will not vary between channels and so should all be raised or lowered together.

The Processing pane provides down conversion options for Mini Converter SDI to Analog and Mini Converter HDMI to SDI.

If a high definition signal is received and the Down Converter is set to "Off", high definition video will be output. When one of the down conversion options is selected and a high definition source is received by the Mini Converter, standard definition will be output.

When the mini switches on the Mini Converter SDI to Analog are set to S-Video or composite video, no video will be seen on the output when Down Converter is set to "Off", as S-Video and composite video only support standard definition video. The down-converted video can be used with component, S-Video or composite analog video for NTSC or PAL, as all three types of analog video support standard definition.

